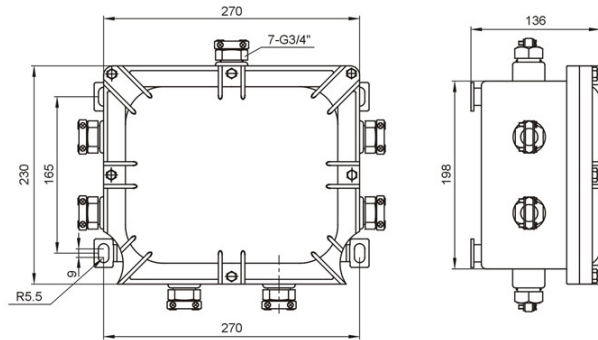
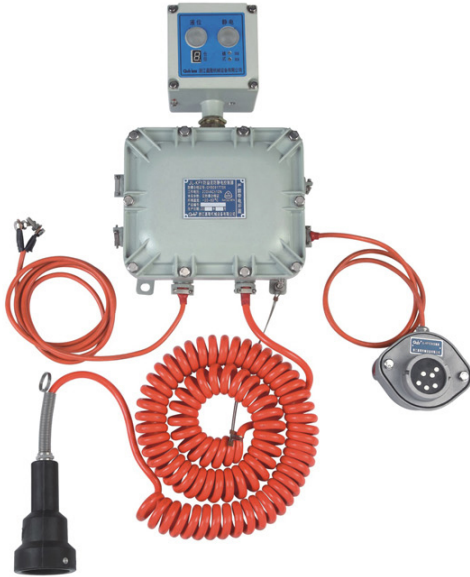




Anti-flow Anti-static System JL-KFY



Anti-flow anti-static system is special designed for bottom loading system, it can effectively prevent the liquid overflow and ensure static connect with ground meet relative safety standard requirements, ensure the bottom loading is safe and reliable.

Technical Data

Working pressure	220VAC±10%
Working current	<20mA
Working temperature	-40°C~60°C
Response time	<1s
Electric resistance	<55Ω
Protect class	IP65
Explosive class	Exd(ia)IIBT4
Alarm method	Voice light alarm
Input signal	Complies with API RP1004, EN13922
Output signal	Relay output, open or closed options, interface capacity 5A, 250VAC
Standard accessories	Standard 6 pins and Spiral Cables, compatibility brand Scully, Civacon, Liquip, Dixon, etc.
Output data	U _o =16.5V I _o =874mA P _o =3.6W C _o =1.8uF L _o =0.09mH

Benefit and Features

- **Digital Circuit Design:** Ensure the system is steady with strong anti-interference.
- **Specialized For Bottom Loading System:** Can be coupled with 8 optic sensors which complies with API standard and one ground bolt.
- **Compatibility:** Compatible with optic sensor of many brands, such as Scully, Civacon, Liquip, Dixon.
- **Self-checking:** Ensure more safety
- **Standard Design:** Design the plug accordance with API standard, match to API socket.
- **Electric Resistance:** Ensure the electrostatic ground resistor which during truck body and ground less than 55ohm.
- **Voice Light Alarm Signal:** Control the system working situation timely.
- **Different capacity available:** Relay switch signal output, the interface capacity 5A,30VDC or 5A, 250VAC.



Main Controller



Voice Light Alarm



Plug Cable Assembly



Return Socket